

EBOX-335xDX3 Series

User's Guide



Copyright

The information in this manual is subject to change without notice for continuous improvement in the product. All rights are reserved. The manufacturer assumes no responsibility for any inaccuracies that may contain in this document, and makes no commitment to update or to keep current information contain in this manual.

No part of this manual may be reproduced, copied, translated or transmitted, in whole or in part, in any form or by any means without the prior written permission of the DMP Electronics Inc.

©Copyright 2016 DMP Electronics Inc.

Special Notice to Users

DMP Electronics Inc. provides no warranty with regard to this manual, the software, or other information contained herein and hereby expressly disclaims any implied warranties of merchantability or fitness for any particular purpose with regard to this manual, the software, or such other information. In no event shall DMP Electronics be liable for any incidental, consequential, or special damages, whether based on tort, contract, or otherwise, arising out of or in connection with this manual, the software, or other information contained herein or the use thereof.

DMP Electronics reserves the right to make any modification to this manual or the information contained herein at any time without notice. The software described herein is governed by the terms of a separated user license agreement or label sticker.

This product contains software owned by DM&P and licensed by third parties. Use of such software is subject to the terms and conditions of license agreements enclosed with this product. Software specifications are subject to change without notice and may not necessarily be identical to current retail versions.

Updates and additions to software may require an additional charge. Subscription to online service providers may require a fee and credit card information. Financial services may require prior arrangements with participating financial institution.

Trademarks Acknowledgment

The EBOX-335xDX3 Series is the registered trademarks of DMP Electronics Inc. Microsoft®, Windows®, and AMI are registered trademarks of Microsoft Corporation and American Megatrends Inc. in the United States and/ or other countries respectively.

Other brand names, product names or trade names appearing in this document are the properties and registered trademarks of their respective owners. All names mentioned herewith are served for identification purpose only.

Safety Information

WARNING

- Do not expose EBOX to rain or moisture, in order to prevent shock and fire hazard.
- Never install EBOX in wet locations.
- Do not open the cabinet to avoid electrical shock. Refer to your nearest dealer for qualified personnel servicing.
- Never touch un-insulated terminals or wire unless your power adaptor and display monitor are disconnected.
- Locate EBOX as close as possible to the socket outline for easy access and to avoid force caused by entangling of your arms with surrounding cables from the EBOX.
- When using EBOX, avoid using or installing the modem to the serial port during a storm or a lightning.
- Do not use the modem or a telephone to report a gas leak in the vicinity of the leak.
- USB connectors are supplied with Limited Power Sources.

DO NOT ATTEMPT TO OPEN OR TO DISASSEMBLE THE CHASSIS (ENCASING) OF THIS PRODUCT. PLEASE CONTACT YOUR NEAREST DEALER FOR SERVICING FROM QUALIFIED TECHNICIAN.

Regulatory

FCC Class A Note

This equipment has been tested and found to comply with the limits for a Class A digital device, pursuant to Part 15 of the FCC Rules. These limits are designed to provide reasonable protection against harmful interference when the equipment is operated in a commercial environment. This equipment generates, uses and can radiate radio frequency energy and, if not installed and used in accordance with the instruction manual, may cause harmful interference in which case the user will be required to correct the interference at his own expense. Testing was done with shielded cables. Therefore, in order to comply with the FCC regulations, you must use shielded cables with your installation.

WARNING

This product complies with EN55022 class A. In a domestic environment this product may cause radio interference in which case the user may be required to take adequate measures.

Changes or modifications to this unit not expressly approved by the party responsible for compliance could void the user's authority to operate the equipment.

This device complies with Part 15 of the FCC rules. Operation is subject to the following two conditions: (1) this device may not cause harmful interference, and (2) this device must accept any interference received, including interference that may cause undesired operation.

This digital apparatus does not exceed the Class A limits for radio noise emissions from digital apparatus as set out in the interference - causing equipment standard entitled "Digital Apparatus", ICES-003 of the Department of Communications.

Manufacturer's Declaration of Conformity

This equipment has been tested and found to comply with the requirements of European Community Council Directives 89/336/EEC and 73/23/EEC relating to electromagnetic compatibility and product safety respectively.

Attention

This product has been designed and certified to comply with certain regulatory requirements pertaining to Information Technology Equipment. This product has not been designed for use as a medical device. Without limitation of the foregoing, this product is not intended and has not been certified for use in a hospital or clinical environment to diagnose, treat, or monitor patients under medical supervision, and is not intended and has not been certified to make physical or electrical contact with patients, nor to transfer energy to or from patients and/or to detect such energy transfer to or from patients.

Purchase Agreement

Purpose:

In accordance to the general commercial conduct of Trust and Fair Trade, herewith below is the agreement for the protection for both parties, DMP and Users in pursuant of trading.

Product Description:

With this product, herewith also known as EBOX-335xDX3 Series, which is a simplified & an economical design of an embedded device for Special Purpose Personal Computing. The basic specification of this product is comprised of the x86 technology, design, and with onboard 1GB/ 2GB DDR3 System memory, VGA display, USB, Serial ports and LAN Interfaces.

Distribution Convention:

1. This Product includes a PC, VESA rack (Optional). Upon receiving this product, kindly please refer to the User' Manual to check for the contents and appearance of this product; contact immediately your nearest dealer or DMP office for any defective or missing parts. The supplier will not be responsible for any reported discrepancy there after the expiration period of 3-days from the received date.
2. In consideration of transportation and the cost of storage, the supplier provides to the distributors a warranty of 12 months. This warranty covers the failure caused by hardware breakdown (excluding hard drives), but does not cover the act of misuse and mishandling.
3. The supplier will not accept unknown post, therefore if you wish to repair or to return your goods – kindly please contact your nearest dealer to make your declaration, and at the same time, apply for an RMA number (RMA stands for Return Merchandise Authorization – please ask for RMA form and fill-up for authorization).
4. The freight for return goods for repair will follow the International customary practice and convention: Both parties is to pay for freight of one shipment each. The shipper is required to prepay the freight from the place of origin (This means that the returnee (user) covers the freight for return goods, while the Supplier covers the freight for goods after the repair).
5. Obsolete warranty is referred to as: (1) Expiration of warranty or (2) Damage due to misuse within warranty. The Supplier will be taken into consideration of the circumstances, to provide repair service with charges expense for obsolete warranty. This expense includes the cost of material and the cost of labor.

Note: If there is other particular issue, not listed in the above conditions, both parties agreed to follow the General Law of Commerce with fair and reasonable discussion in handling and resolving the argument.

Contents

Chapter 1

- 02 Unpacking Your EBOX Mini PC

Chapter 2

- 05 EBOX-335xDX3 Series Overview
- 06 System Specification
- 07 Peripherals

Chapter 3

- 10 BIOS Reconfiguring
- 11 Drivers Installation Guide
- 14 Additional Information
- 14 Screen rotation
- 15 Turn off the display function setting
- 16 PXE Diskless boot setting
- 17 Linux installation

Chapter 4

- 23 Onboard Connectors Summary
- 25 Pin Assignments

Chapter 5

- 28 Taking Care of your EBOX
- 30 Troubleshooting

Chapter 6

- 33 Terms and Condition
- 33 Warranty
- 33 Service and Support
- 33 Return Merchandise Authorization (RMA) Policy
- 33 Shipping Policy

Chapter 1

Unpacking Your EBOX Mini PC

Congratulation! You have just acquired EBOX-335xDX3 Series, please check the following items:

Packing List:

Item No.	Description	Q'ty
1	EBOX-335xDX3 Series VESA PC	x1
2	75 x 75 mm to 100 x 100 mm VESA mounting rack (Optional)	x1

Note: The accessories are subject to change without immediate notice.

Check Before Use

1. EBOX-335xDX3 Series Unit



2. VESA rack (Optional)



Preface

EBOX-335xDX3 Series: VESA PC



The EBOX-335xDX3 Series is a revolutionary device which is especially designed for limited physical space and temperature concerns. No matter you are in a jammed office, a crowded place, or public transportation, EBOX-335xDX3 Series can be easily integrated with a VESA LCD to bring it to access at any time.

It can be attached to any VESA mounting fixture; allowing it to be securely mounted onto desks, walls, or buildings, and thereby optimizes your work area. It can also attach directly to any size LCD for a mobile system for the use at trade shows, presentations, promotions, etc. Unlike traditional portable laptop design, the EBOX-335xDX3 Series can be used with a large size LCD. Furthermore, with FANLESS design, EBOX-335xDX3 Series is ideal to be used in the environment where temperature demand is critical.

So, if you are looking for a device that is able to provide with more mobility & space, and at the same time uses less power consumption, EBOX-335xDX3 Series will be surely meet your need.

The VESA® FDMI™ Standard defines mounting interfaces, hole patterns and associated cable/ power supply locations for LCD monitors, plasma displays and other flat panel devices. EBOX-335xDX3 Series is designed to fit this standard to make monitor attachment quickly and easily.

Chapter2

EBOX-335xDX3 Series Overview



Front Panel

A: Reset Button

For system reset or turn on.

Available in 335xDX3/ 335xDX3-C2

B: Power LED

The power LED lights up when the system is turned on.

C: Audio Line Out

Audio output to speaker.

D: Audio Mic In

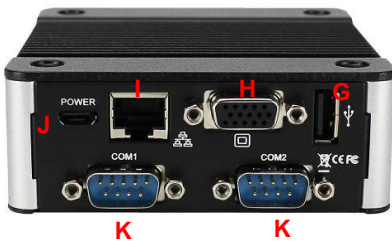
For Microphone input.

E: USB v2.0 ports

For connection to devices with USB Interface such as CD/ DVD-ROM, USB HDD, etc.

F: SD Slot

For the storage SD Card, the system is bootable from SD Card.



Back Panel

G: USB V2.0 port

H: VGA port D-Sub 15-pin

I: RJ-45 LAN Jack

J: Power Jack

+5V @2A power adapter is highly recommend

K: RS-232 port

Available in 335xDX3-C2/ 335xDX3-C2AP

System Specifications

CPU

Vortex86DX3 (1GHz)

Main Memory

1GB DDR3 (32-bit DRAM bus, EBOX-3350DX3 Series)

2GB DDR3 (32-bit DRAM bus, EBOX-3352DX3 Series)

For Windows 7 users, EBOX-335x Series support 32bit version only, 64bit version does not support.

BIOS

AMI BIOS

VGA

Resolution up to 1920 x 1080 pixels

Peripheral

1. USB V2.0 x 3 (2 at front, 1 at rear)
2. SD Card slot x 1
3. Audio (Mic In, Line Out)
4. RS-232 port x 2

Available in EBOX-335xDX3-C2/ 335xDX3-C2AP

Dimension & Weight

EBOX-335xDX3/ 335xDX3-AP

95 x 95 x 20 mm/ 280g

EBOX-335xDX3-C2/ 335xDX3-C2AP

95 x 95 x 35 mm/ 360g

Power consumption

+5VDC @ 1150mA

Supported Windows O/S

Windows 7 Home/ Pro

Windows 7 Embedded

Windows XP Home/ Pro

Windows XP Embedded

Linux OS

(click [Linux Support List](#) for details)

Peripherals

Connecting the Power Adaptor



A: DC Power Jack

To use EBOX-335xDX3 Series immediately, please attach the USB cable or supplied AC adapter for the power source.

Note: With the Auto Power On support function (Optional), the system then will be turned on automatically.

Connecting the Monitor



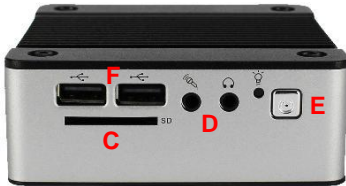
B: VGA Connection

Make your LCD display connection with the VGA cable to the 15-pin D-Sub VGA port.

Peripherals

Connecting the USB

EBOX-335xDX3 series provides 3 external USB ports (2 at front, 1 at rear).



C: SD Slot

For booting device by SD Card.

D: Microphone/ Earphone

The EBOX-335xDX3 Series supports Microphone Input and Speaker Output

E: Reset Button

For system reset or turn on
Note: Models with Auto Power On feature has Reset Button Eliminated.

F: USB Ports

The USB ports are available for connection to USB devices such as CD-ROM/ USB Drive.

Connecting the LAN



G: RJ-45 LAN

There is an available RJ-45 LAN jack for Ethernet connection.
(see left diagram for RJ-45 Jack).

Connecting Serial port



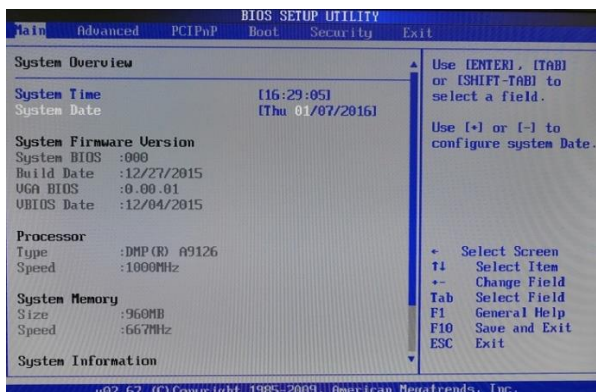
H: Serial Ports (Available in EBOX-3350DX3-C2/ 3350DX3-C2AP)

The serial port is usually connected to a serial device like modem or terminal devices.

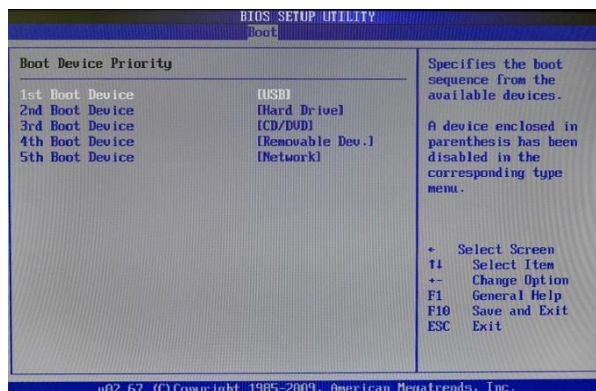
Chapter3

BIOS Reconfiguring

1. AMI BIOS is used in the EBOX-335xDX3 Series. To reconfigure the EBOX-335xDX3 Series, press or hit the key to enter the BIOS setup main menu as below:



2. Press <Esc> to go back to main menu.
3. Press <F9> to load factory default setting.
4. Adjust your BIOS settings, and be sure that your settings will affect. For Windows platform user, please use default setting directly.
5. Press <Tab> move to Boot menu to find default setting as below:



6. Set up the boot device order, press <F10> and select "Save Settings and Exit", press "Y" to save the changes. EBOX-335xDX3 Series will restart accordingly to the new setup.

Drivers Installation guide

Under the Windows series OS, the following drivers need to be installed manually.

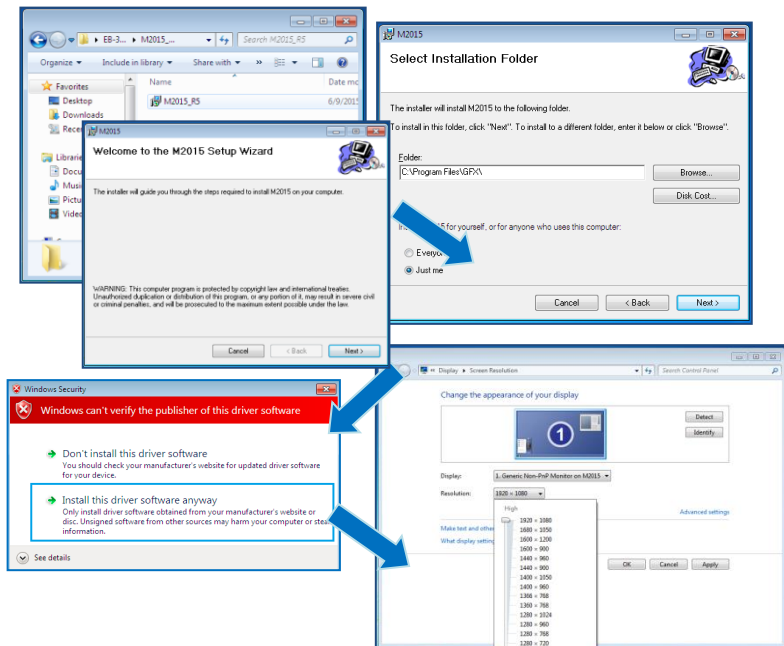
1. VGA driver
2. Ethernet driver
3. Wireless USB wifi Dongle driver (Optional)
4. Audio driver (for windows XP only)

Note:

1. Please download EBOX-335xDX3 Series from [EBOX Support Page](#).
2. For Windows 7 or Windows 7 Embedded OS, install the XMPlay for audio player download [here](#).

VGA driver:

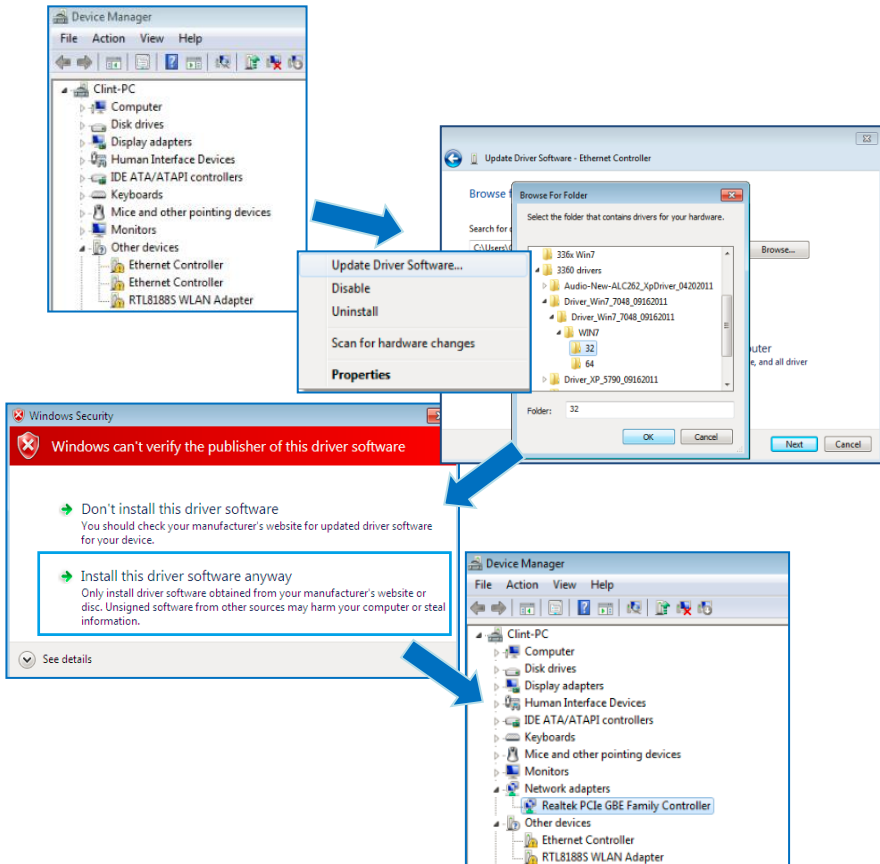
Unzip the downloaded file and double click the setting .exe file then “Next” as below to install:



After VGA driver installation completed, you will have to restart the computer. Then you will be able to select the resolution up to 1920 x 1080 pixels.

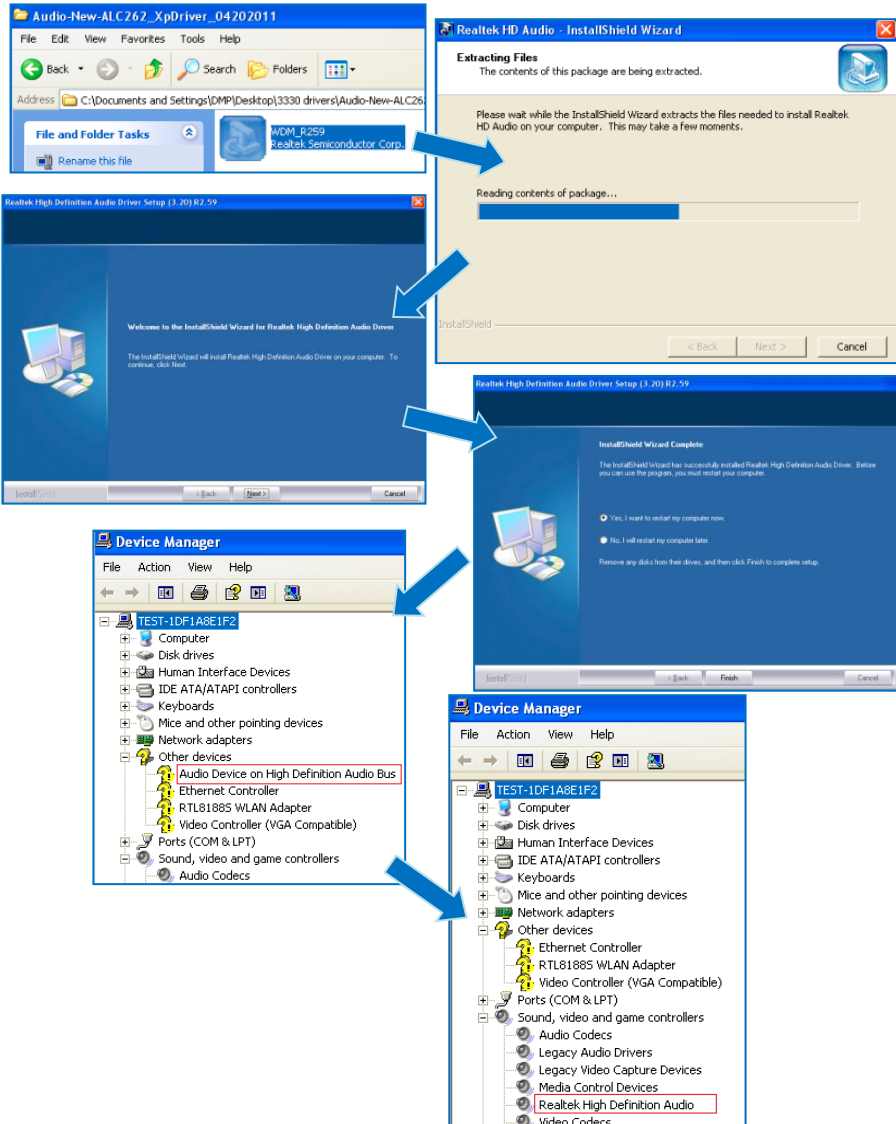
Ethernet driver:

1. Find the yellow question mark of Ethernet in the Device Manager under the control panel/ system.
2. Select "Update Driver Software" and choose the right path, then click "Install this driver software anyway" when Windows Security popped out.
3. After installation completed, the Device Manager will update and show the correct device.



Audio driver:

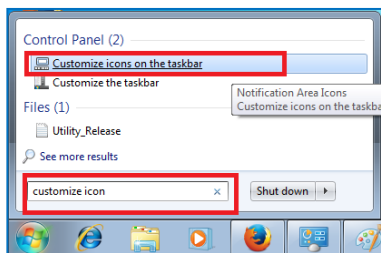
Unzip the downloaded file and double click the setting .exe file, then “Next” as below to install. After the installation completed, the Device Manager will update and show the correct device.



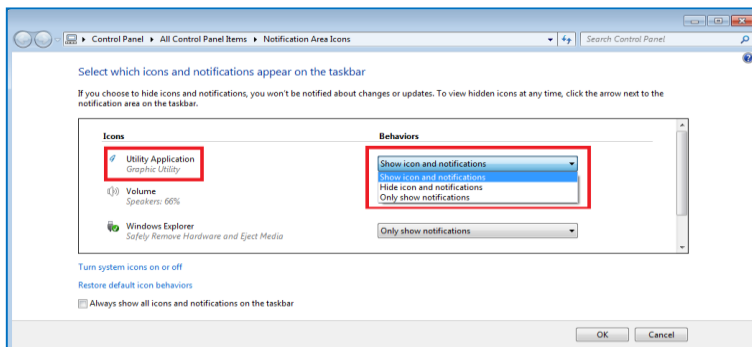
Additional information

Screen rotation:

1. After VGA driver installation completed, type “Customize icons” in search bar.



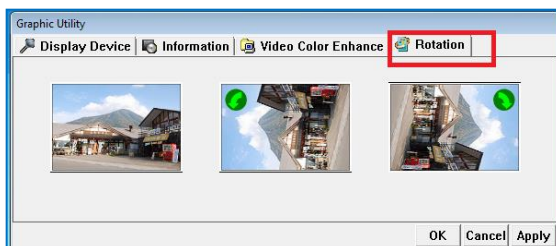
2. Adjust Utility Application to “Show icon and notifications”.



3. A blue icon = Graphic Utility appears on screen, double click it.

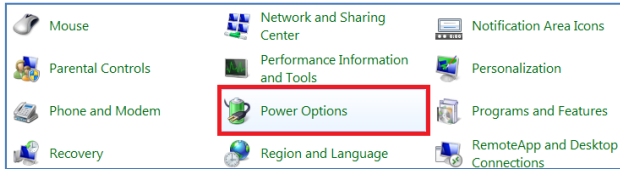


4. In Graphic Utility, go to Rotation section. Select the direction of rotation then press Apply to test and OK to save the changes.

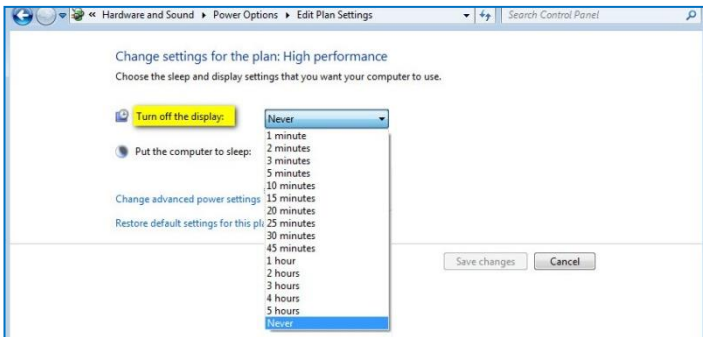


Turn off the display function setting:

For Windows 7 or Windows 7 Embedded OS users, click **Start Menu > Control Panel > Power Options** or simply search for **"Power Options"** (without quotes). You will see a list of different power plans.

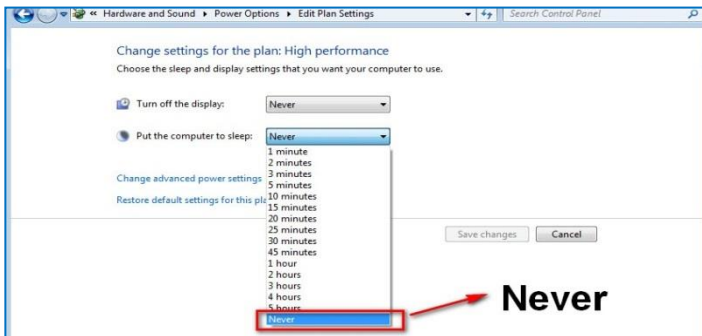


The plan currently in use has a blue dot in front of it. Click **"Change Plan Settings"** next to the power plan currently use. Click on the drop-down menu list, that is exactly next to "Turn off the display". From the options, you can set the amount of idle time.



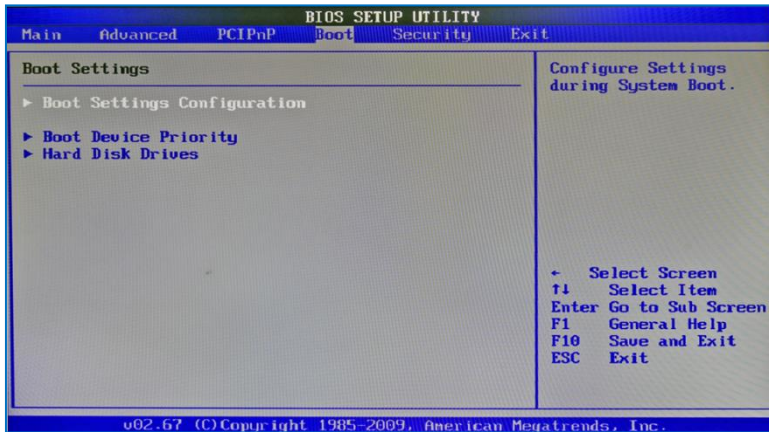
EBOX-335xDX3 Series does not support sleep function, it cannot wake up after sleep.

To avoid the unwakeable situation, please disable the function by setting "Put the computer to sleep" to "Never".

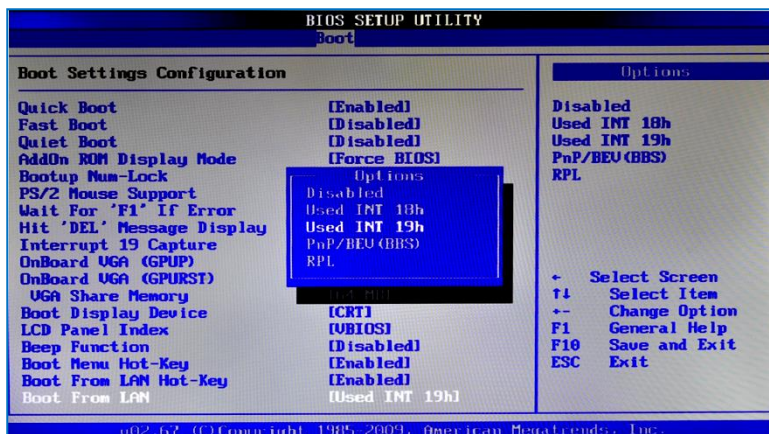


PXE Diskless boot setting:

1. Boot up EBOX unit and press to get into BIOS menu.
2. Select "Boot" then move to "Boot Settings Configuration" and press ENTER.



3. Move to "Boot From LAN" and choose "Used INT 19h" then press "F10" to save setting and exit.

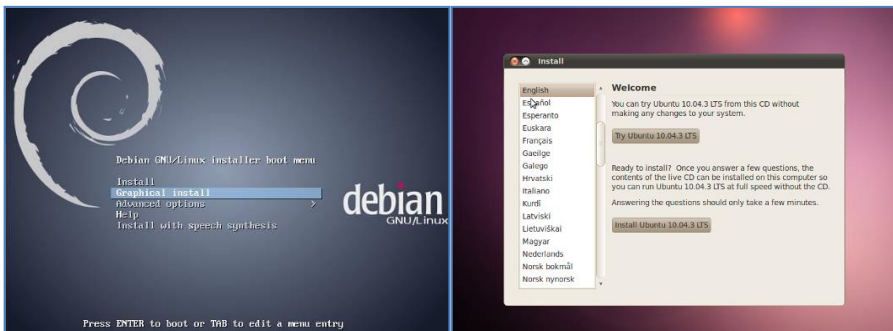


Linux installation For Debian7.0/ Ubuntu10.04

Regarding the system installation of Debian7.0/ Ubuntu10.04, please follow the steps and suggestions to complete the system installation on the EBOX-335xDX3 Series platform. The following is a brief instruction, users may configure it according to their specific needs.

1. Basic system installation

- For Debian7.0, after booting from the installation CD, moving straight to install system would get a text mode system only, please choose Graphic Install for Graphical User Interface OS installation.



- Set basic configuration such as language, keyboard map and time zone, etc. steps by steps.
- Then the system will detect the network hardware, requires users to load the firmware files for network device rtl8168, just answer no for this inquiry and move forward.
- Next the system will detect multiple network interfaces on the EBOX-335xDX3 Series, and users have to decide the primary network interface, both of them could be chosen.

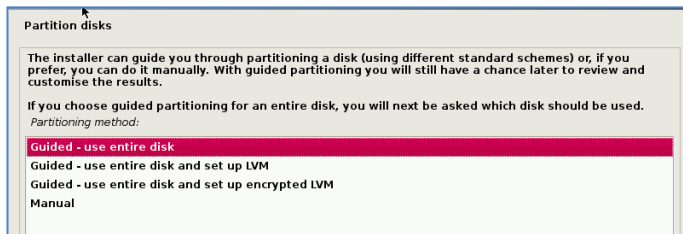
Note: the Ethernet cable must be plugged in during this period.

Configure the network

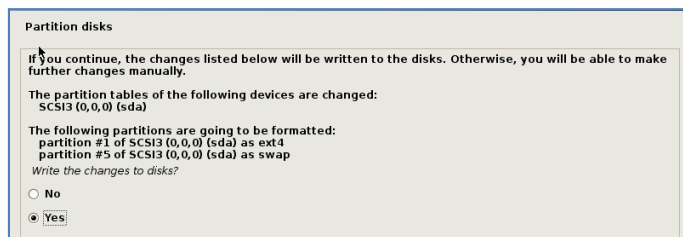
Please enter the hostname for this system.

The hostname is a single word that identifies your system to the network. If you don't know what your hostname should be, consult your network administrator. If you are setting up your own home network, you can make something up here.
Hostname:

- During the installation process, the system would ask users to create partitions for the operating system. Following example is using entire disk for the beginner. Choose "Guided - use entire disk".



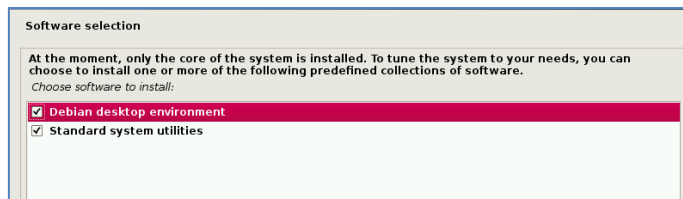
- Select "Yes" to create the partition.



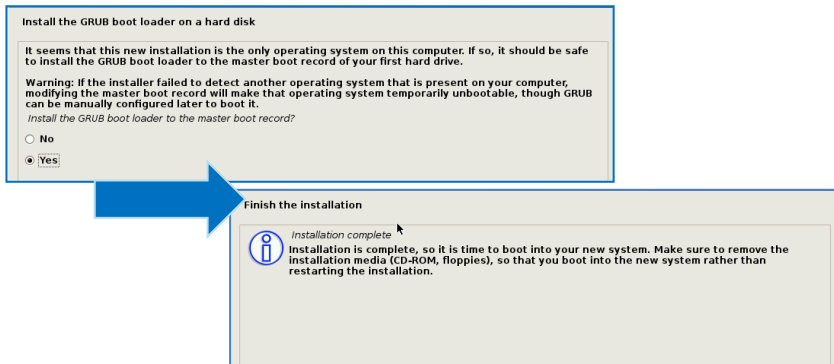
- Then the system would keep asking you few questions for configuration, suggestions were attached as follow.
- Then the system would keep popping out questions for configuration, suggestions as below:

For Software selection:

Please remark both the Debian desktop environment and standard system utilities, then click to continue. It would start the package installation, and around hundred packages would be installed, after installation completed, the next indication message would pop up.



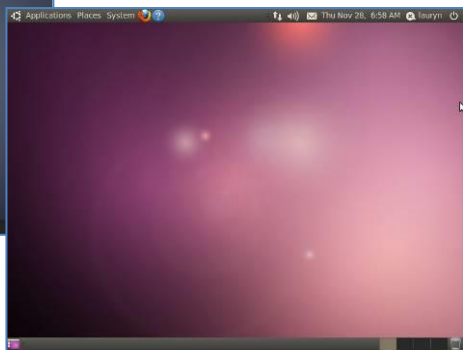
For Install the GRUB boot loader on a hard disk:
Answer YES to complete the installation as last procedure.



- When it's completed, the disc tray will eject and inform you, then press continue to restart and be ready to enjoy the new system!



The Debian7.0



The Ubuntu10.04

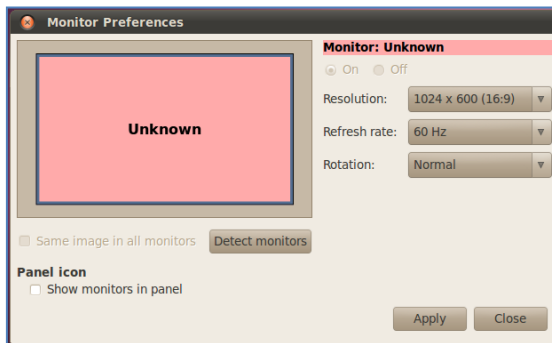
2. Install the VGA driver (Console mode)

- Switch to console mode by pressing key <Ctrl> + <Alt> + <F1>, then copy the VGA driver rdc_drv.so to the driver folder /usr/lib/xor/modules/drivers/, please refer to [Linux support page](#) for most updated drivers.
- Follow instruction below to execute.

```
#/etc/init.d/gdm stop
#X -configure
#cp /root/xorg.conf.new /etc/X11/xorg.conf
#/etc/init.d/gdm restart
```

※Please click [xorg.conf](#) to download for your system, if the display is out of range.

- Reboot and make sure all the display is normal then set the resolution as requested.



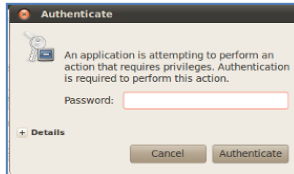
The supported resolutions:

1920x1080 (16:9)	1280x1024 (5:4)	1280x720 (16:9)
1600x1200 (4:3)	1440x900 (16:10)	1024x768 (4:3)
1680x1050 (16:10)	1280x960 (4:3)	800x600 (4:3)
1400x1050 (4:3)	1366x768 (16:9)	640x480 (4:3)
1440x960 (3:2)	1360x768 (16:9)	
1400x960	1280x768 (16:10)	

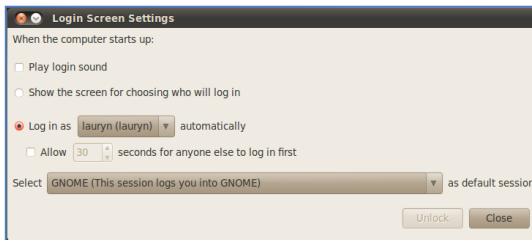
3. The system configuration

Enable the Auto login System / Administration / Login Screen

Execute the utility “Login Screen” and enter the password to process it.

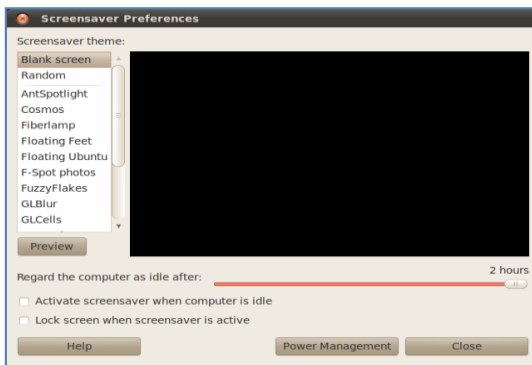


Set the Log in as “user account” automatically.



Disable the power saving mode when system idle, System / Preference / Screensaver

Unmarked the option “Active the screensaver when computer is idle”.



Click close to complete the system configuration.

Chapter4

Onboard Connectors Summary

Summary Table for CPU Board			
Nbr.	Description	Type of Connections	Pin nbrs.
J3	VGA	D-Sub Connector	15-pin
J4	DC +5V Input	Micro USB B Type	5-pin
J5	Line out	Audio Jack	2-pin
J6	Mic in	Audio Jack	2-pin
J7	USB (Front)	USB Connector	4-pin
J8	USB (Front)	USB Connector	4-pin
J9	USB (Back)	USB Connector	4-pin
J12	Ethernet LAN	RJ-45	8-pin
J13 (Note)	COM1 Port	Box Header 5 x 2 2.0mm	9-pin
J14 (Note)	COM2 Port	Box Header 5 x 2 2.0mm	9-pin

Note: J13 & J14 only available in EBOX-335xDX3-C2/ C2AP

► Front Connectors Outline



- A: Reset Button
- B: Power LED
- C: Line out
- D: Mic in
- E: USB V2.0
- F: SD Slot

EBOX-335xDX3
FRONT LOOK



EBOX-335xDX3-AP
FRONT LOOK

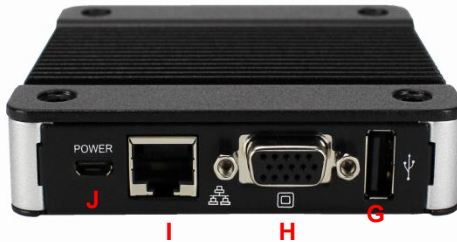
Models with Auto Power On
do NOT have front Reset Button.



EBOX-335xDX3-C2/ 335xDX3-C2AP
FRONT LOOK

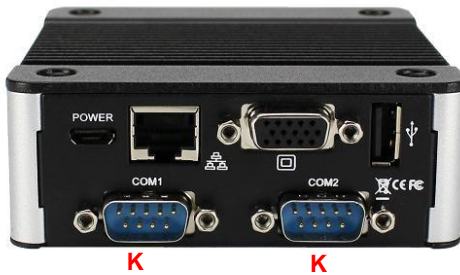
► Rear Connectors Outline

EBOX-335xDX3/ 335xDX3-AP REAR LOOK



G: USB V2.0
H: VGA
I : RJ-45 LAN
J : DC Power Jack

EBOX-335xDX3-C2/ 335xDX3-C2AP REAR LOOK

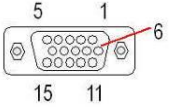


K: RS-232 Port


Only Available in EBOX-335xDX3-C2/ 335xDX3-C2AP

Pin Assignments


J3: VGA – 15-pin D-Sub Connector

	Pin #	Signal Name	Pin #	Signal Name	Pin #	Signal Name
	1	MR	6	GND	11	NC
	2	MG	7	GND	12	VCC
	3	MB	8	GND	13	HYSYNC
	4	NC	9	NC	14	VSYNC
	5	GND	10	GND	15	VCC

J4: Micro-B USB DC Power Input

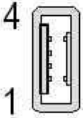
	Pin #	Signal Name
	1	VCC
	2	Data –
	3	Data +
	4	ID
	5	GND

J7, J8: USB (180°) : For connection to external USB device – 4-pin USB Type 1 Connector (H)

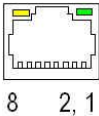
	Pin #	Signal Name
	1	VCC
	2	Data –
	3	Data +
	4	GND

Pin Assignments

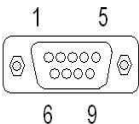
J9: USB (90°) – For connection to external USB device – 4-pin USB Type 1 Connector (V)

	Pin #	Signal Name
	1	VCC
	2	Data –
	3	Data +
	4	GND


J12: LAN: RJ-45 Connector

	Pin #	Signal Name	Pin #	Signal Name
	1	FTXD+	2	FTXD-
	3	FRXIN+	4	NC
	5	NC	6	FRXIN-
	7	NC	8	NC

J13, J14: RS-232 9-pin D-Sub Connector

	Pin #	Signal Name	Pin #	Signal Name
	1	DCD	2	RXD
	3	TXD	4	DTR
	5	GND	6	DSR
	7	RTS	8	CTS
	9	RI	--	--

LEDS: POWER ON/ OFF

	LED Color	State
	Blue	Power On

Chapter5

Taking Care of your EBOX

This section gives you some guidelines on using EBOX-335xDX3 Series – Safe using, Storing and Handling.

Storing

- ▶ Do not place EBOX-335xDX3 Series in a location that is subject to:
 - Heating sources, such as stove, oven, heater, radiator or air duct
 - Direct contact from sunlight
 - Rain or moisture area
 - Excessive dust accumulation area
 - High humidity place
 - Constant or occasional mechanical movement, vibration or shock
 - Strong magnets or magnetic fields or magnetically unshielded speakers
 - Out of the operating temperature range from 5°C to 50°C
- ▶ Do not place other electronic device or electrical equipment near EBOX-335xDX3 Series. The electromagnetic field of the EBOX-335xDX3 Series may cause interference subjecting to malfunction.
- ▶ Provide adequate air ventilation (circulation) to prevent internal buildup of heat. Do not place EBOX-335xDX3 Series near the wall, behind the curtains or draperies, in between two books that block its ventilation slots. Leave a space of at least 8 inches (20cm) behind the sides and back panel of the EBOX-335xDX3 Series.
- ▶ Change of environmental temperature: Problems may occur when there is a sudden change of environmental temperature, or if the EBOX-335xDX3 Series is brought directly from a cold location to a warm one, moisture may condense inside EBOX-335xDX3 Series. Turn off the device, and contact your nearest dealer.
- ▶ Check the surrounding appliance(s) before using EBOX-335xDX3 Series. Since the EBOX-335xDX3 Series uses high-frequency radio signal and may interface with radio or TV reception causing interference or poor signal display. When this happens, relocate the EBOX-335xDX3 Series by a suitable distance away from it.
- ▶ Do not drop the EBOX-335xDX3 Series from working table nor place heavy objects on top of it.

Using Cables for Connection

- ▶ To avoid the problem, use only the specified interface cables in your accessory bag. The supplier will not be responsible for the connection arising from the other unspecified peripheral equipment.
- ▶ Do not use cut or damaged cables for connection.

Cleaning Your VESA PC

- ▶ Clean the VESA PC with a soft, dry cloth or a soft cloth lightly moistened with a mild detergent solution.
- ▶ Do not use any type of abrasive pad, scouring powder, or solvent such as alcohol or benzene, as these may damage the finish of EBOX.
- ▶ When a solid object falls or a liquid spills onto the EBOX, turn off the EBOX immediately and unplug the LAN and power cables. Contact a qualified person or your dealer to check the EBOX before you use it again.
- ▶ Always disconnect the power cord from the power source before cleaning the EBOX.

Troubleshooting

This section describes the techniques of resolving some basic problems that you encounter when using EBOX-335xDX3 Series. For more troubleshooting guidelines, please contact your nearest dealer for technical support.

Troubleshooting Your VESA PC

A. VESA PC does not start –

- ▶ Make sure the EBOX-335xDX3 Series is properly secured and plugged into a power source before it is turned on. Make sure the power indicator shows the power is on. See chapter 2 for more information about “EBOX-335xDX3 Series Overview”.
- ▶ When the EBOX-335xDX3 Series is plugged into a power strip or the UPS (Uninterruptible Power Supply), make sure the power strip or UPS is turned on and working normally.
- ▶ Check if your VGA or LCD monitor is properly plugged into a power source and turned on. Make sure the brightness and contrast controls are adjusted correctly. See the manual that came with your display (monitor) for details.
- ▶ Check if your power control button does not function, by removing the AC adaptor. Wait for one minute, and then reattach all power connection before pressing the power button.
- ▶ Condensation may cause the EBOX-335xDX3 Series to malfunction for a while. If this happens, do not use the EBOX-335xDX3 Series for at least one hour.
- ▶ When you have checked all the above guidelines and the EBOX-335xDX3 Series does not work. Remove the power adaptor from the EBOX-335xDX3 Series, unplug the power supply, and plug it in again. Then turn on the power.
- ▶ When booting EBOX-335xDX3 series, if LED power indicator is on but not detecting the crt monitor, please reboot and keep pressing <C> key to force CRT display (VGA mode).

B. BIOS Error Message –

BIOS error message appears when my VESA PC starts

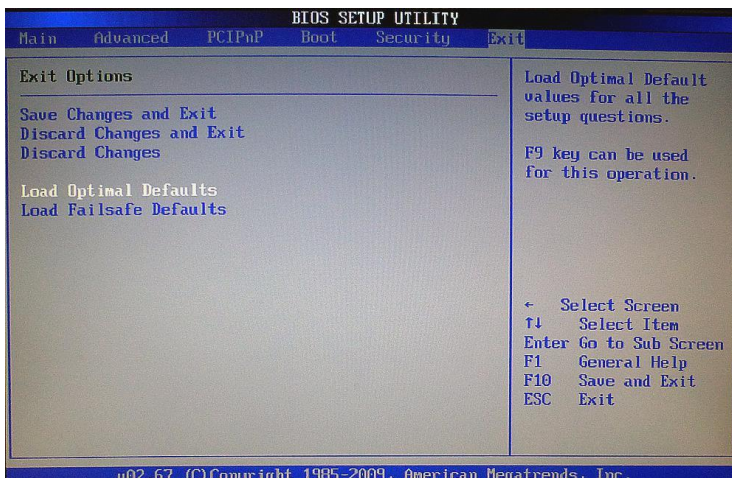
If the BIOS error message appears, press any key to resume or, hit to enter BIOS setup main menu, follow these steps:

1. Press , and the BIOS Setup main menu appears, check if HDD is detected. If it is not detected, use Direction keys <↑↓> to choose “AUTO” and then go back to the main menu by pressing <ESC>. Move your cursor down with Direction keys <↓>, and choose “Save Settings and Exit”, a message dialog appears as seen below, hit <Enter>.

“Save current settings and exit (Y/N)? Y”

2. Go to “Exit” menu using the Direction keys <↑↓> and choose the option “Load Optimal Defaults”, then press <Enter>. A message dialog appears as seen below, hit “Y” key and presses <Enter> to save and recover to the factory setting.

“Load Optimal Defaults (Y/N)? Y”



(BIOS Setup menu "Exit")

C. "Operating System Not Found" –

A message indicating that "Operating system not found" appear when my VESA PC starts (Windows won't start)

- ▶ Enter your BIOS setup main menu by pressing key, be sure that the C: drive is enable.
- ▶ If Windows still does not start, follow these steps to initialize the BIOS:
 1. Turn off the EBOX-335xDX3 Series.
 2. Remove any peripheral devices connected to the EBOX-335xDX3 Series.
 3. Restart the EBOX-335xDX3 Series.
 4. Press to enter **BIOS Setup main menu** window.
 5. Follow the steps as written in item **B. BIOS** error message.
- ▶ If you have just connected EBOX-335xDX3 Series to a CD/ DVD or USB Drivers, remove these peripherals. And restart to confirm that the Windows operating system starts properly. If EBOX-335xDX3 Series continues to display the message "Operating system not found," and Windows does not start, please contact your nearest dealer for servicing.

Chapter6

Terms and Conditions

Warranty

The warranty terms for EBOX-335xDX3 Series are twelve (12) months from the shipped month. During the warranty period, DMP Electronics Will repair replace the product covered under this limited warranty.

Service and Support

DMP Electronics Inc. provides the technical support for hardware problems with your system throughout the warranty period. The technical support service is limited to configuration and operation of EBOX-335xDX3 Series sold by DMP Electronics Inc. The technical support service does not offer software tutoring or training.

Return Merchandise Authorization (RMA) policy

If the DMP staff or dealer determines that a part is defective. Purchaser must call our technical support service to obtain an RMA number before attempting to return any part. Please refer to your nearest dealer for :

To obtain an RMA number, Purchaser must follow procedures as below :

1. Complete the DMP Electronics Inc. standard RMA Form and fax back to the RMA Department.
2. The RMA Number must be used within 7 DAYS.
3. The RMA Number must be shown clearly on your shipping label.
4. DMP Electronics Inc. must receive all Returns before a replacement will be sent.
5. The repair cost depends on the parts, the damage reasons, and whether under warranty period...etc. The Seller will charge the Purchaser in a reasonable price.
6. A copy of the invoice for the RMA product(s) will also be shipped to Purchaser.
7. The freight of return to DMP Electronics Inc. is charged to the Purchaser's account and accompanied by an RMA number. Any Returns with freight collect will be refused and returned to you. After Repairing, the cost of freight will be paid by Seller.
8. DMP Electronics Inc. must receive all returned goods within the warranty period.

Shipping Policy

The Purchaser must pre-pay shipping for any defective system or parts returned under the warranty. DMP Electronics Inc. shall not be liable for risk of loss or damage during shipment of your returned system or parts if you fail to insure the shipment.

All products must be shipped back to DMP Electronics Inc. in original or equivalent packaging. DMP Electronics Inc. will ship the repaired or replacement product(s) to the Purchaser by freight prepaid. Purchaser assumes the risk of loss. DMP Electronics Inc. shall not be responsible for failure of the delivery service to make on-time delivery.